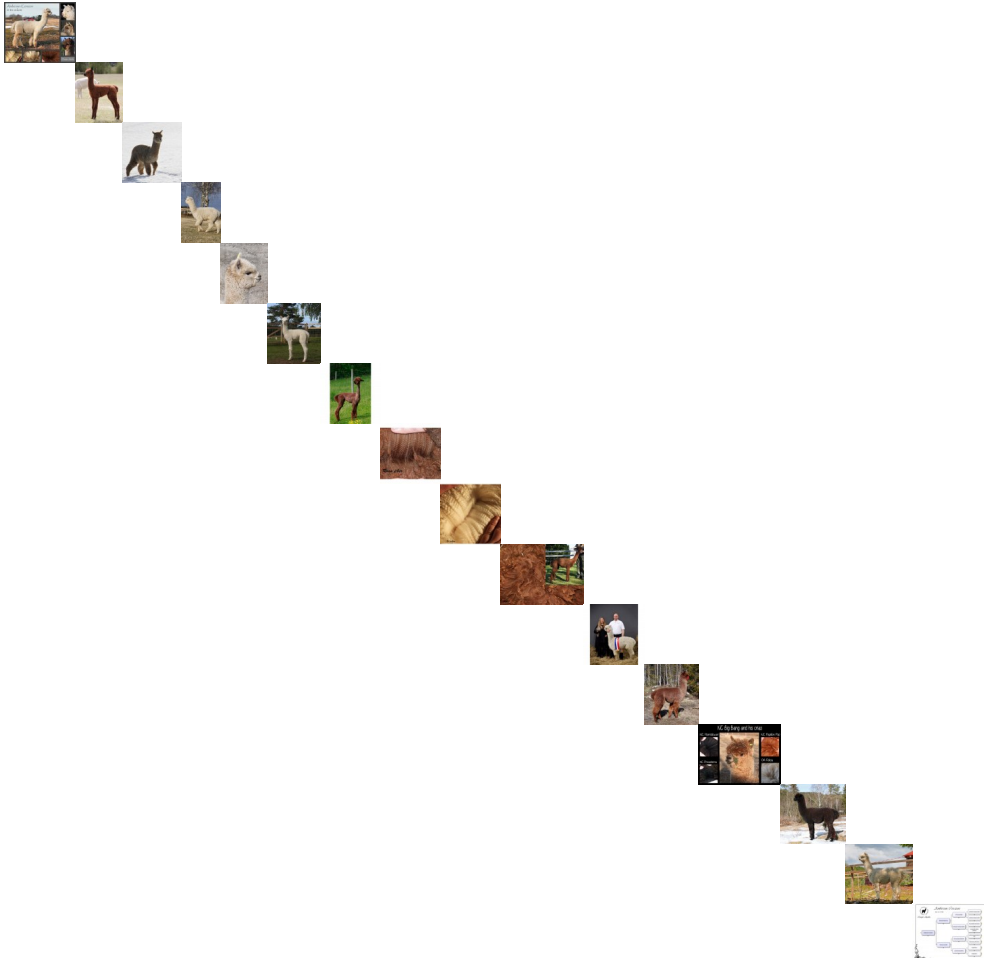


Ambersun Corazon



13 år





Alpakkahingst med imponerende utstillings- og avlskarriere A Herdsire with an impressive show- and breeding carriere

Vurdering: Ingen kundevurdering ennå.

[Still selger et spørsmål](#)

Beskrivelse

Corazon er en staselig kar med en lang og suksessrik utstillingskarriere bak seg. Han har et stødig temperament, og har til nå gitt sine kvaliteter videre til avkom. Det mørkeste han har levert er brun, men hvit og fawn dominerer blant hans avkom.

Corazon har til nå forbedret hoppene til neste generasjon. Han produserer avkom som er høyreiste, langbente, sterke og sunne.

Corazons premieringer i Australia:

- 2005 Strathalbyn, Supreme Champion
- 2005 Melbourne Royal, Championship
- 2005 National Show, Championship
- 2005 Strathalbyn, Championship
- 2006 Royal Adelaide Show, Championship
- 2006 National Show, Championship
- 2006 Melbourne Royal, Championship
- 2006 Bendigo Sheep and Wool Show, Championship
- 2006 Ballarat Sheep and Wool Show, Championship
- 2006 Werribee Alpaca Fest, Championship
- 2006 Clare, Championship
- 2007 AlpacaFest, Championship
- 2007 Mt Pleasant, Supreme Champion
- 2007 Melbourne Royal Show, Championship
- 2007 Ballarat Sheep & Wool Show, Championship
- 2007 Bendigo Sheep & Wool Show, Championship
- 2007 Strathalbyn Show, Championship
- 2008 Adelaide Royal, Championship
- 2008 Mt Pleasant, Championship
- 2008 AlpacaFest, Championship

Han har Champion avkom i tre land og noen av Corazons avkom vises i bildekarusellen.

In English:

Corazon is a proud male with a long and distinguished show carrier behind him. He has a solid temperament, and have consistently given his qualities on to his offspring. The darkest colour he have delivered is brown, bug whites and fawns dominates his progeny.

Corazon have up until now improved on all females and produces offspring that are tall, long legged, strong and healthy.

Show results above.

He now has Champion offspring in three countries and some of his offspring are shown in the photos above.